

Layout Legend

- 1 HV Yard
- 2 Roads
- 3 Car Parking area
- 4 Paved area for transformer and generator removal
- 5 Generator removal
- 6 Unit Transformer
- 7 Unit Control Cubicle
- 8 Generator
- 9 Gas Turbine
- 10 Steam Turbine
- 11 Cable Tunnel /Trenches
- 12 Admin Building
- 13 Station Control Room
- 14 Transformer Area
- 15 Turbine Hall
- 16 Pipe Trench
- 17 Pipe Rack (Bridge)
- 18 Bypass Exhaust Stack
- 19 Heat Generator (HRSG)
- 20 Exhaust Stack
- 21 Condensate Cooling (ACC)
- 22 Water Treatment Plant Area
- 23 Gas Process Plant
- 24 Gas Supply Line
- 25 Demin Water Storage area
- 26 Service Water Storage Area
- 27 Fire Water Storage Area
- 28 Service Water Pump Area
- 29 Fire Water Pump Area
- 30 Fin-Fan Heat Exchangers
- 31 Cem Enclosure
- 32 HRSG Blowdown Tank and Sump
- 33 Condensate Pumps
- 34 Auxiliary Boiler
- 35 Stores area
- 36 Workshop Area
- 37 Permanent Security Access Control Building
- 38 Temporary /Outage Laydown Area
- 39 Laboratory
- 40 Kitchen and Ablution Building
- 41 Pollution Control Area
- 42 Diesel Generator Area If required
- 43 MCC Room
- 44 Diesel Fuel Pump Plant
- 45 Diesel Fuel Storage Tank
- 46 Diesel Fuel Offloading Area
- 47 Station and Control Air Building
- 48 Top Soil/ Spoil Area
- 49 Municipality Water Supply Point

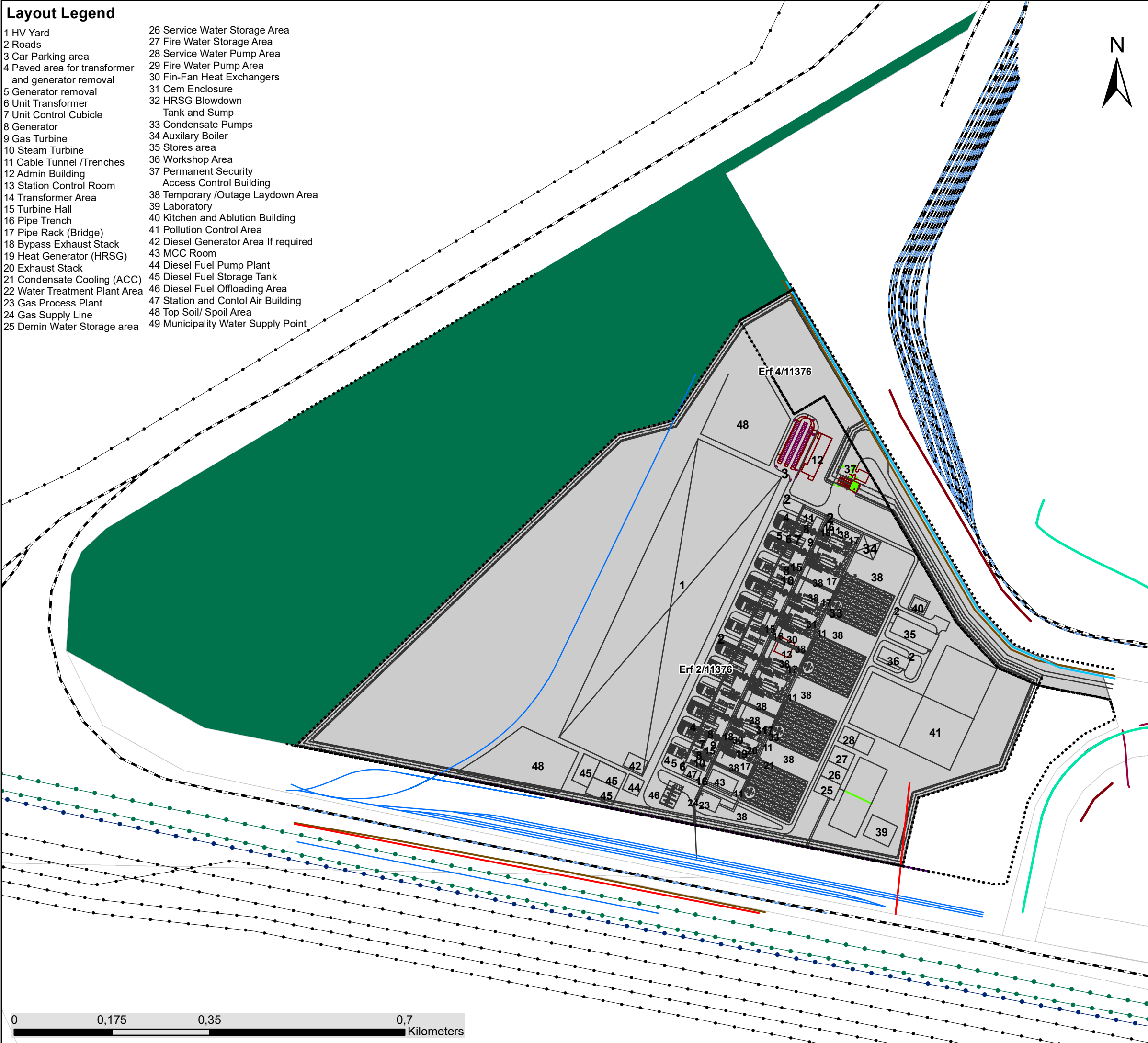
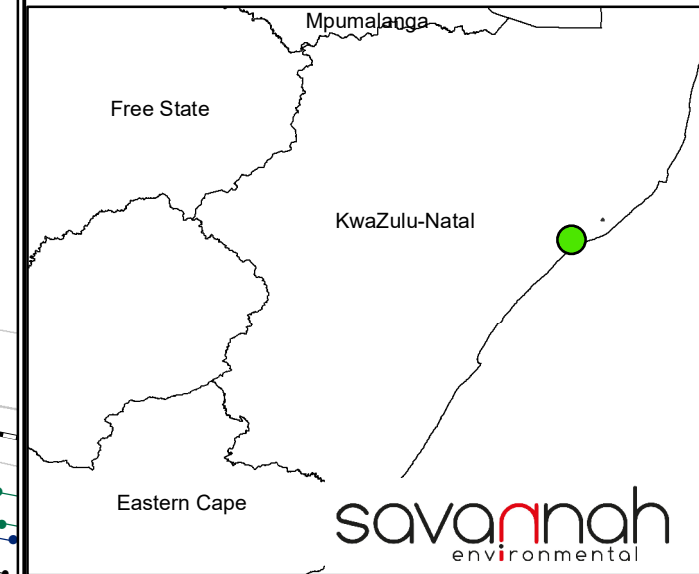
Richards Bay Combined Cycle Power Plant, KwaZulu Natal Province

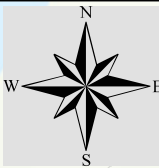
Layout Map

Legend

- 100m Buffer line
- NFEPA Wetlands
- Spoornet existing lines
- Railway Line
- Perimeter-line
- Site 6 Gas Pipeline
- Proposed Gas Pipeline to Sites 1
- MUNIC AOI Water Pipes
- MUNIC AOI Storm Water Pipes
- MUNIC AOI Sewer Pipes
- MUNIC AOI Munic 11 kV OHL line
- MUNIC AOI Munic 132kV OHL line
- Existing Power Line
- FUTURE SIDINGS
- CCGT Layout
- Secondary Roads
- Biodiversity Offset Area
- Project Site (71ha)

Scale: 1:6 491
 Projection: LO31 WGS_1984
 Map Ref.: Richards Bay CCGT Project - Environmental Sensitivity Map - 30.01.18



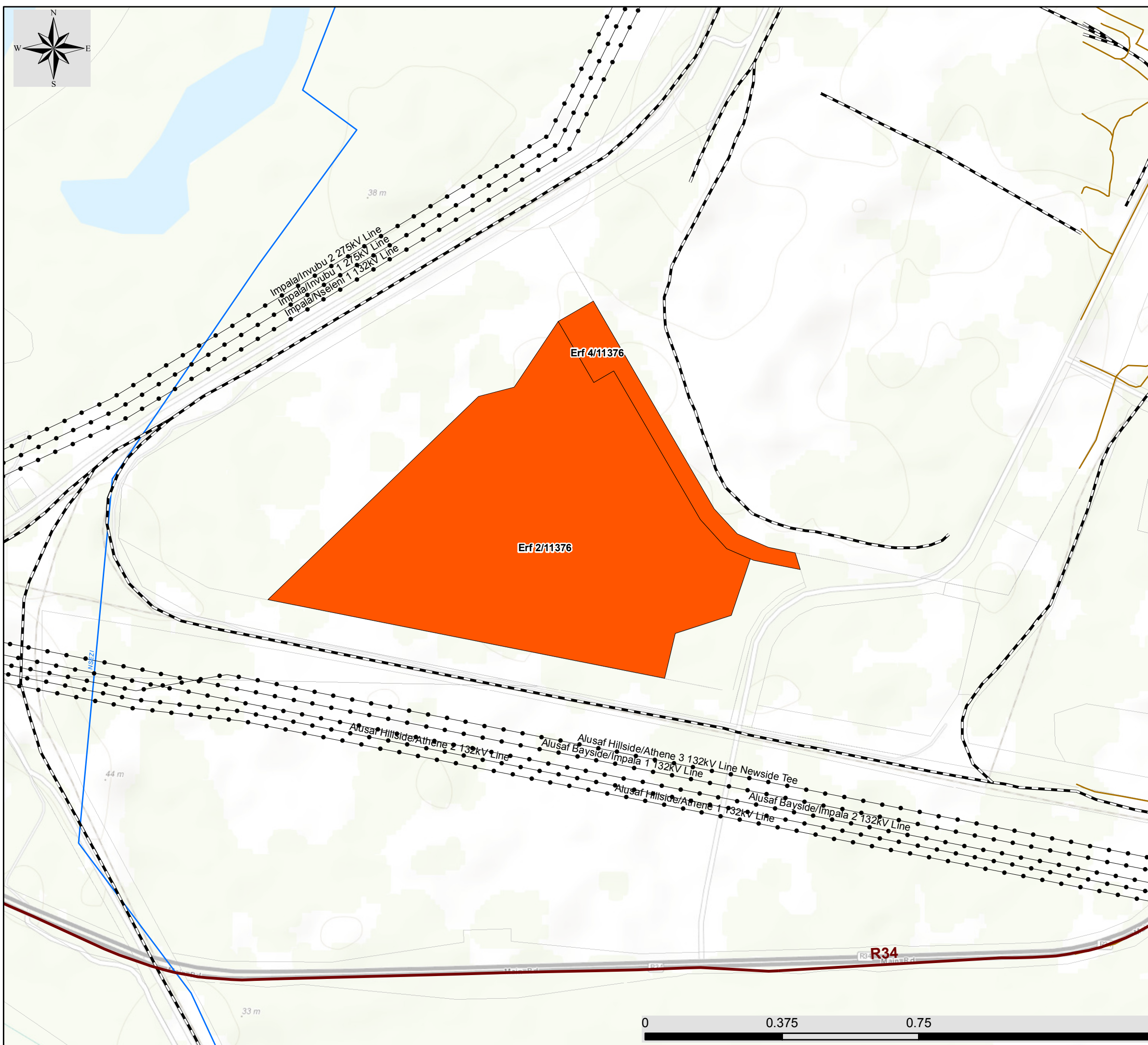


Richards Bay CCPP

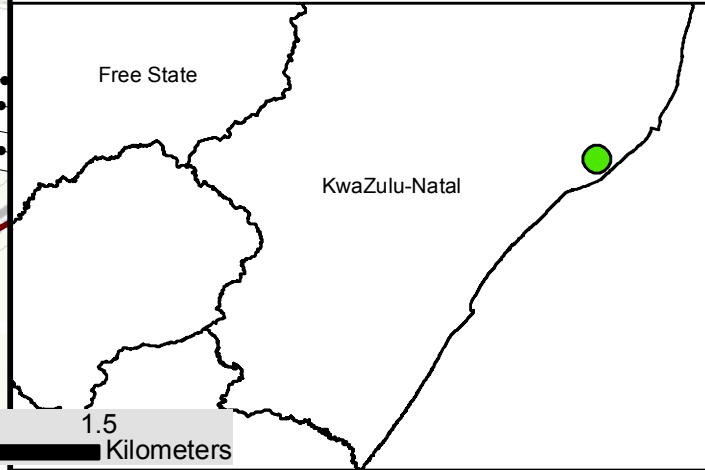
Locality Map

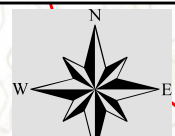
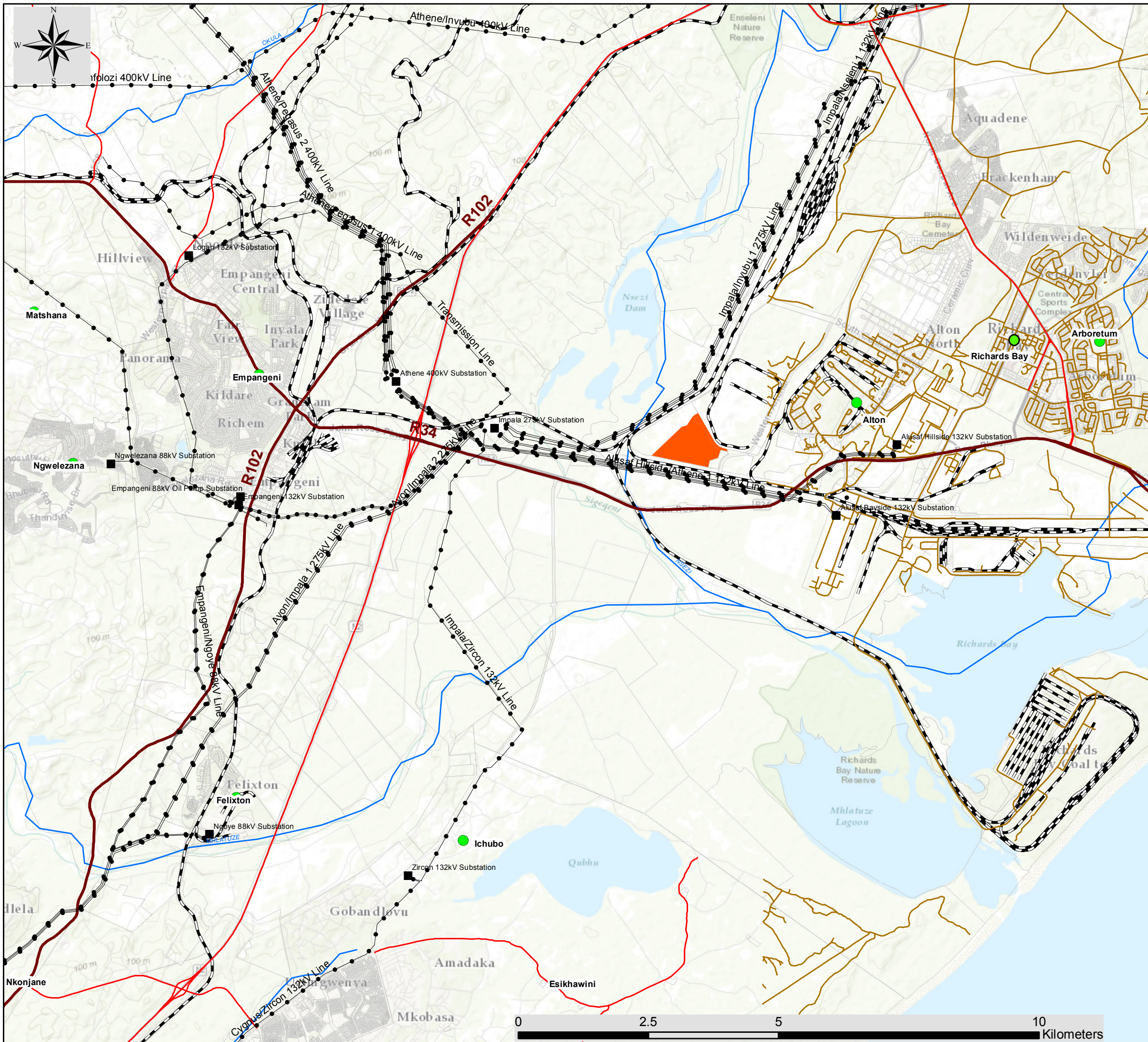
Legend

- Town
- Distribution Substation
- Eskom Power Line
- Regional road
- Main road
- Secondary Roads
- - - Railway Line
- Perennial River
- Project Site (71ha)
- Farm Portions



Scale: 1:10 000
Projection: LO31 WGS_1984
Map Ref.: Richards Bay CCGT Project - Locality Map (zoom-in)_16.05.17





Richards Bay CCGP

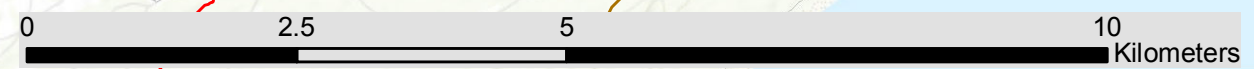
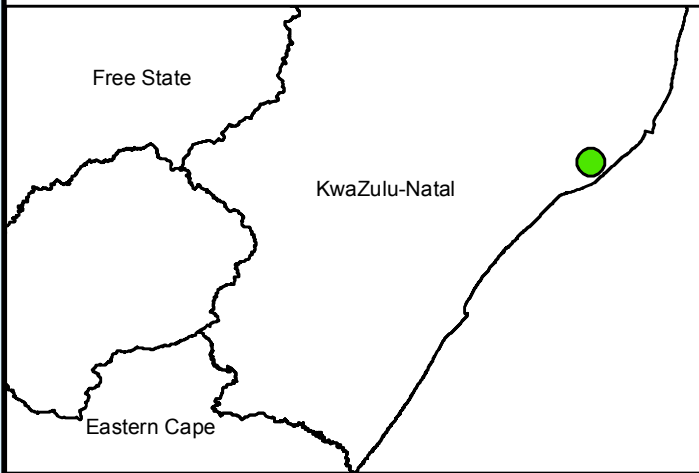
Locality Map

Legend

- Town
- Distribution Substation
- Eskom Power Line
- Regional road
- Main road
- Secondary Roads
- Railway Line
- Perennial River
- Project Site
- Farm Portions



Scale: 1:70 000
 Projection: LO31 WGS_1984
 Map Ref.: Richards Bay CCGT Project - Locality Map_15.05.17



Layout Legend

- 1 HV Yard
- 2 Roads
- 3 Car Parking area
- 4 Paved area for transformer and generator removal
- 5 Generator removal
- 6 Unit Transformer
- 7 Unit Control Cubicle
- 8 Generator
- 9 Gas Turbine
- 10 Steam Turbine
- 11 Cable Tunnel /Trenches
- 12 Admin Building
- 13 Station Control Room
- 14 Transformer Area
- 15 Turbine Hall
- 16 Pipe Trench
- 17 Pipe Rack (Bridge)
- 18 Bypass Exhaust Stack
- 19 Heat Generator (HRSG)
- 20 Exhaust Stack
- 21 Condensate Cooling (ACC)
- 22 Water Treatment Plant Area
- 23 Gas Process Plant
- 24 Gas Supply Line
- 25 Demin Water Storage area
- 26 Service Water Storage Area
- 27 Fire Water Storage Area
- 28 Service Water Pump Area
- 29 Fire Water Pump Area
- 30 Fin-Fan Heat Exchangers
- 31 Cem Enclosure
- 32 HRSG Blowdown Tank and Sump
- 33 Condensate Pumps
- 34 Auxiliary Boiler
- 35 Stores area
- 36 Workshop Area
- 37 Permanent Security Access Control Building
- 38 Temporary /Outage Laydown Area
- 39 Laboratory
- 40 Kitchen and Ablution Building
- 41 Pollution Control Area
- 42 Diesel Generator Area If required
- 43 MCC Room
- 44 Diesel Fuel Pump Plant
- 45 Diesel Fuel Storage Tank
- 46 Diesel Fuel Offloading Area
- 47 Station and Control Air Building
- 48 Top Soil/ Spoil Area
- 49 Municipality Water Supply Point

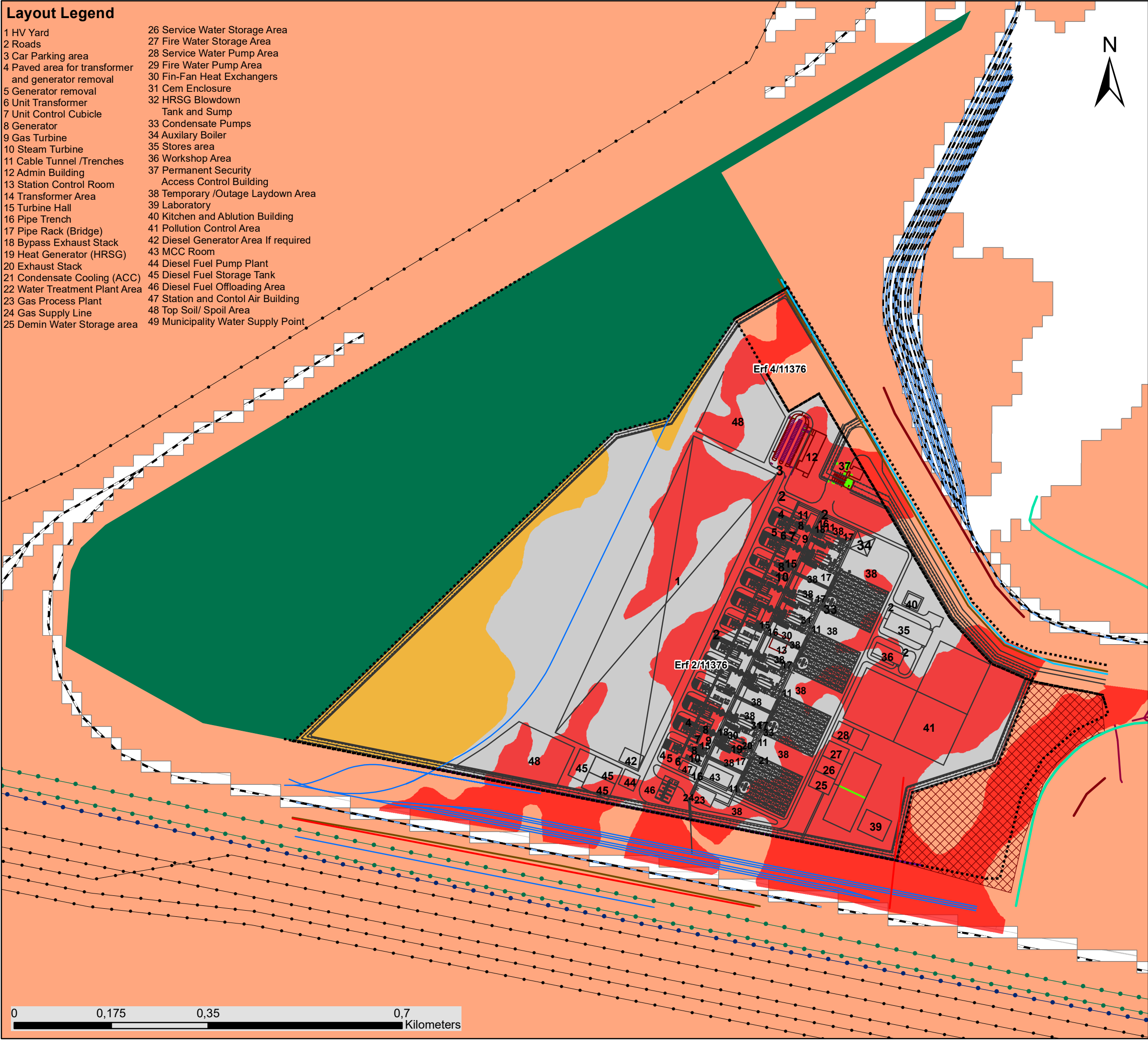
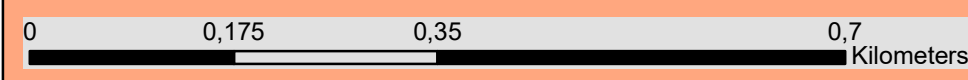
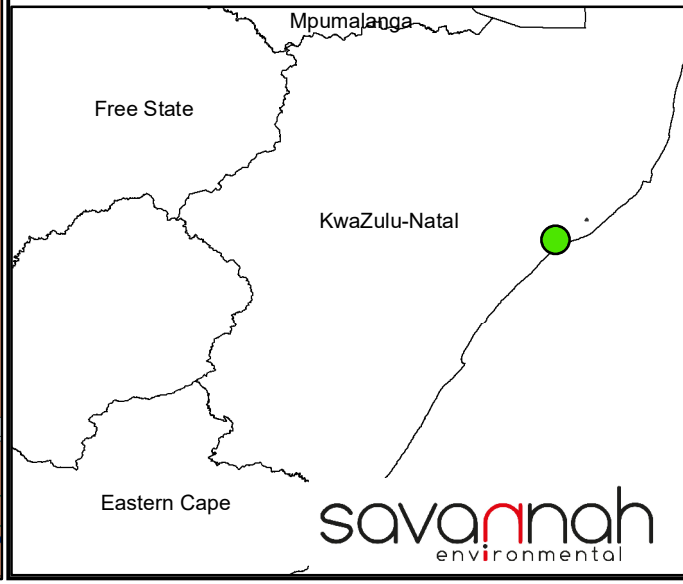
Richards Bay Combined Cycle Power Plant, KwaZulu Natal Province

Environmental Sensitivity Site Layout Map

- Legend**
- 100m Buffer line
 - NFEPA Wetlands
 - Spoornet existing lines
 - Railway Line
 - Perimeter-line
 - Site 6 Gas Pipeline
 - Proposed Gas Pipeline to Sites 1
 - MUNIC AOI Water Pipes
 - MUNIC AOI Storm Water Pipes
 - MUNIC AOI Sewer Pipes
 - MUNIC AOI Munic 11 kV OHL line
 - MUNIC AOI Munic 132kV OHL line
 - Existing Power Line
 - FUTURE SIDINGS
 - CCGT Layout
 - Secondary Roads
 - Project site

- Environmental Sensitivities (no-go areas)**
- Biodiversity Offset Area
 - Conservation Area
 - CBA
- Wetlands**
- High Ecological and Aquatic Sensitivity
 - Moderate Ecological and Aquatic Sensitivity

Scale: 1:6 491
 Projection: LO31 WGS_1984
 Map Ref.: Richards Bay CCGT Project - Environmental Sensitivity Map - 30.01.18





Richards Bay CCGP

Environmental Sensitivity Map

Legend

—•— Existing Power Line

- - - Railway Line

■ Project Site (71ha)

Environmental Sensitivities (no-go areas):

▨ Conservation Area

■ Biodiversity Offset Area

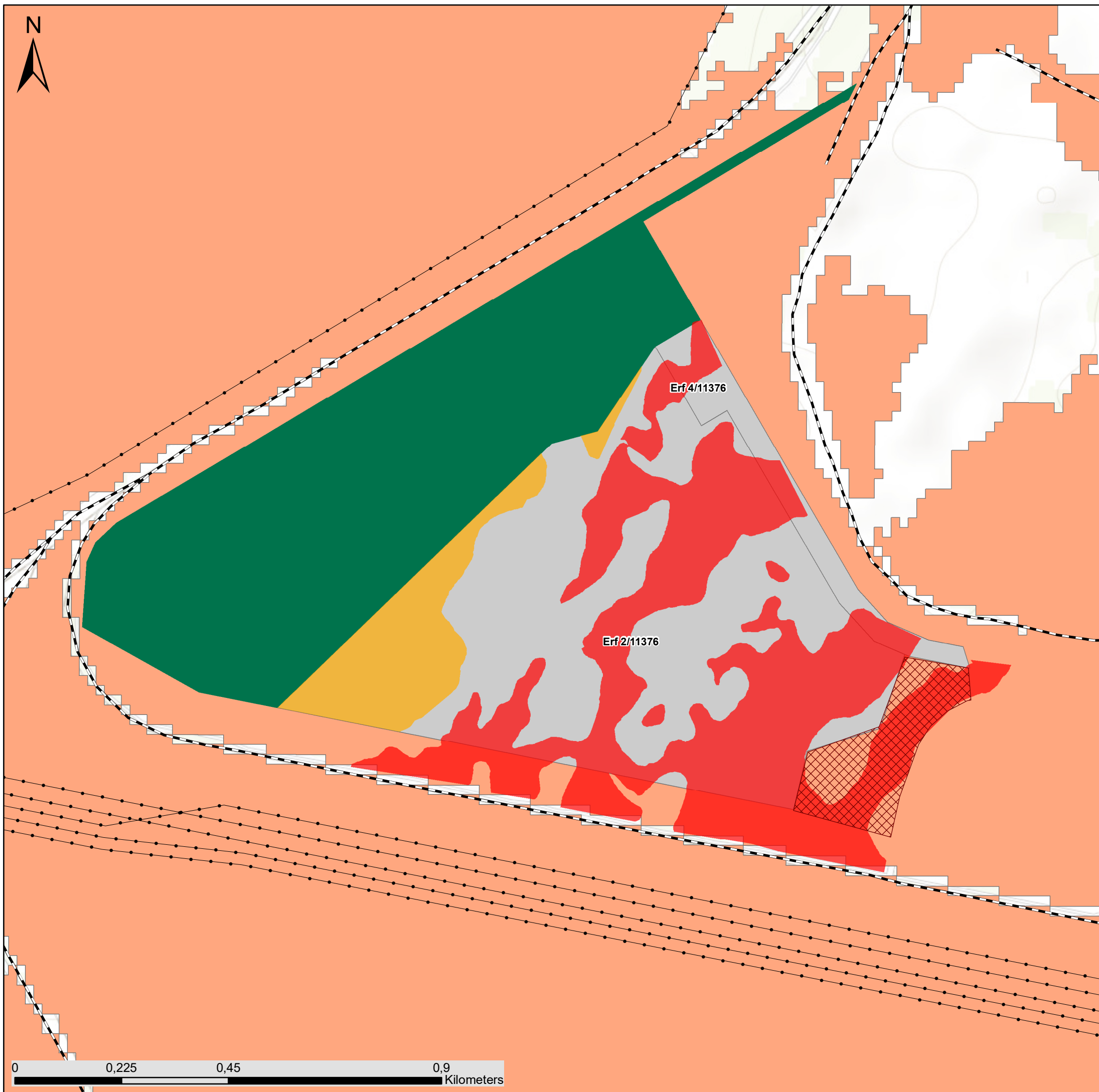
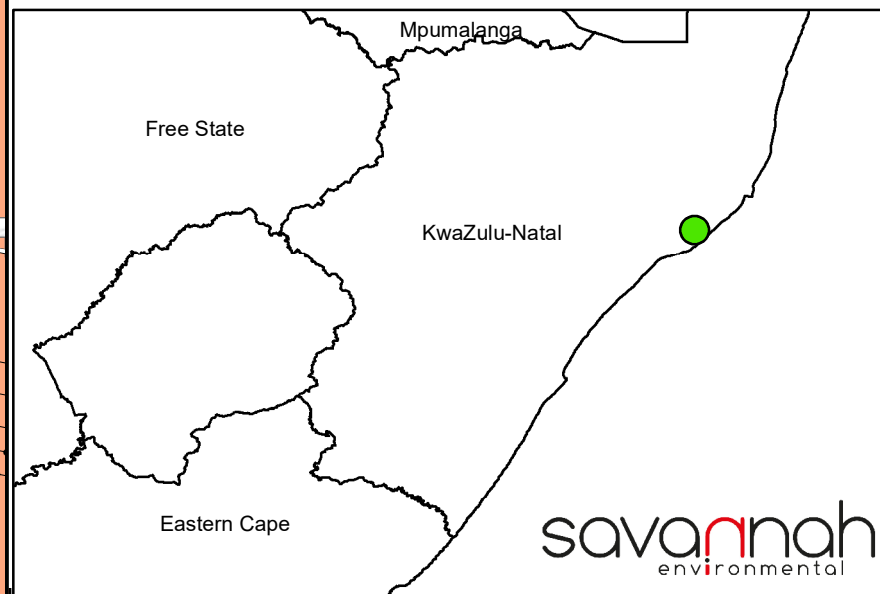
■ CBA

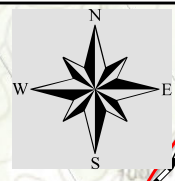
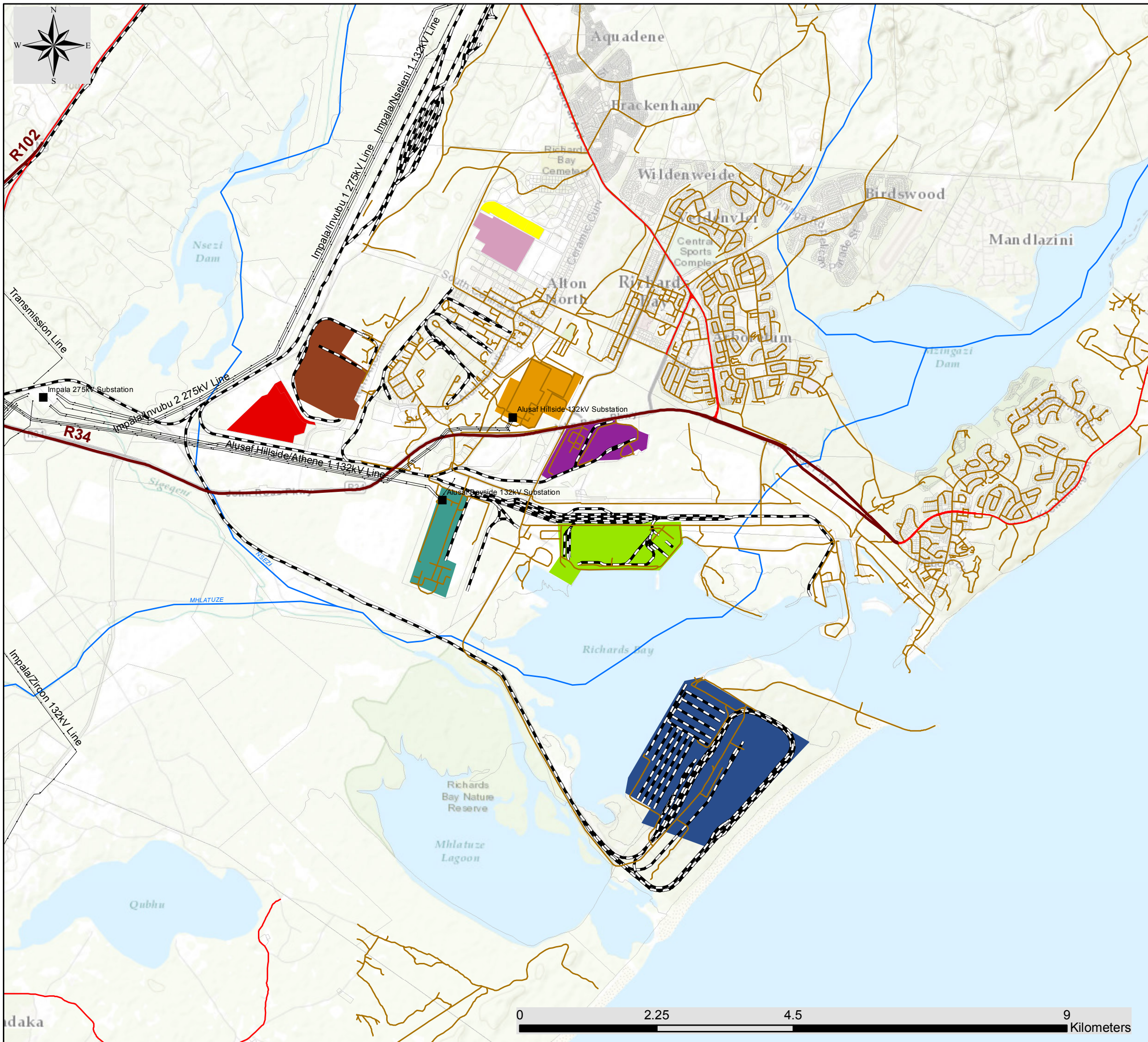
Wetlands

■ High Ecological and Aquatic Sensitivity

■ Moderate Ecological and Aquatic Sensitivity

Scale: 1:8 000
Projection: LO31 WGS_1984
Map Ref.: Richards Bay CCGT Project - Environmental Sensitivity Map - 30.01.18





Richards Bay CAPP

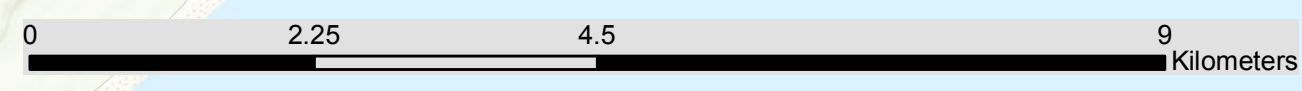
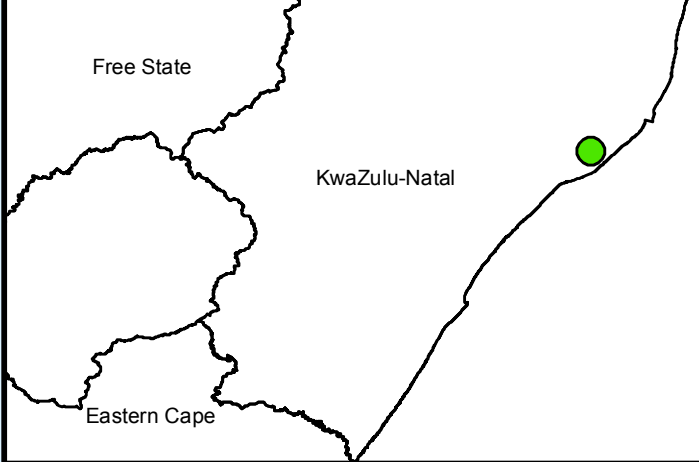
Cumulative Map considering Industrial Development

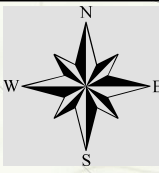
Legend

- Distribution Substation
 - Eskom Power Line
 - Regional road
 - Main road
 - Secondary Roads
 - Railway Line
 - Perennial River
 - Farm Portions
 - Project Site
- ### Industrial Development
- Gas to Power Plant Richards Bay (authorised)
 - Bayside Aluminium Richards Bay (existing)
 - Fermentech Fertilizer Supplier (existing)
 - Mondi Richards Bay (existing)
 - Port Richards Bay (existing)
 - Richards Bay Coal Terminal (existing)
 - South32 Alliminium (existing)
 - Tata Steel KZN (existing)



Scale: 1:60 000
 Projection: LO31 WGS_1984
 Map Ref.: Richards Bay CCGT Project - Cumulative Map - 10.04.17


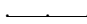












Richards Bay CCPP

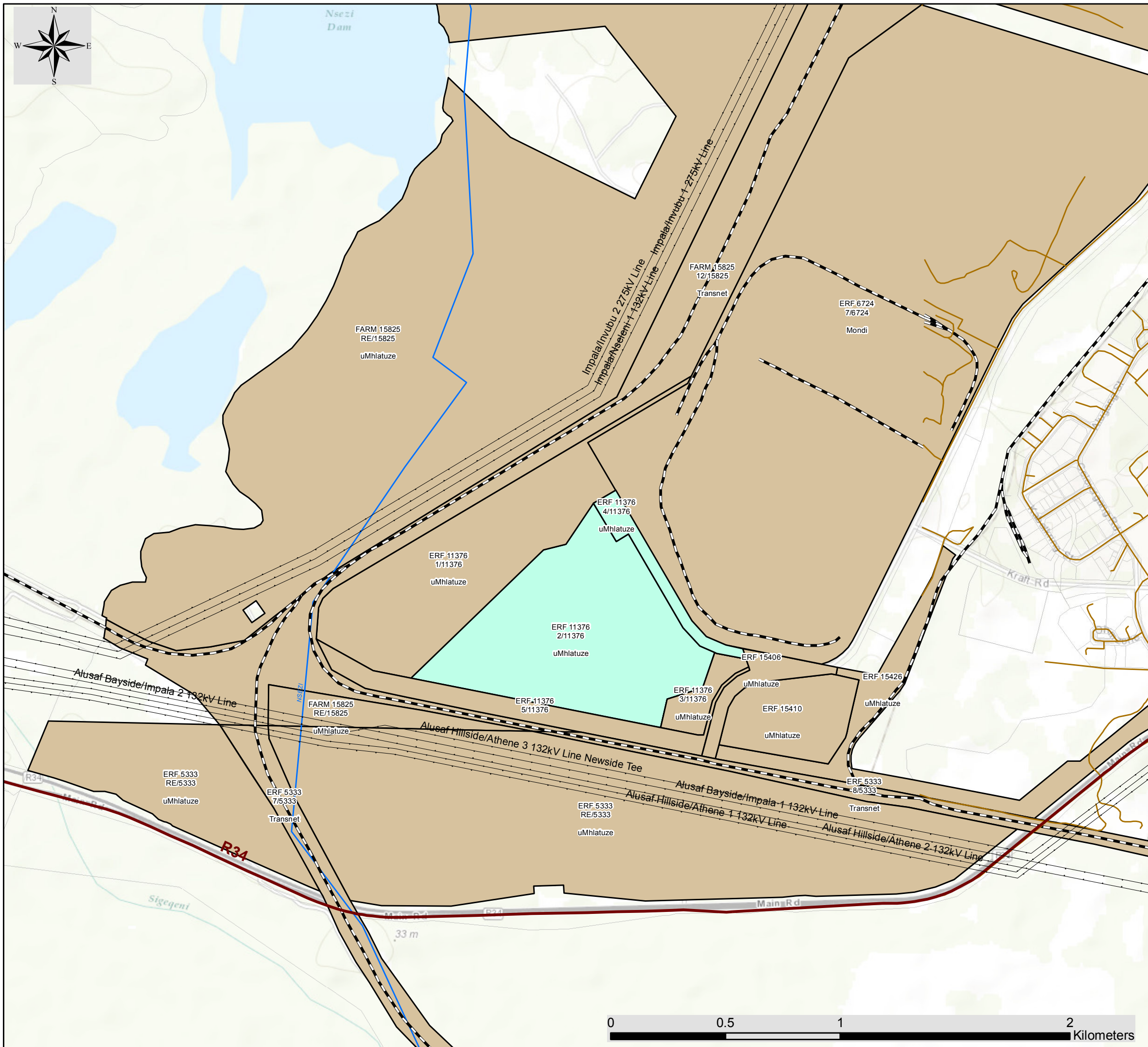
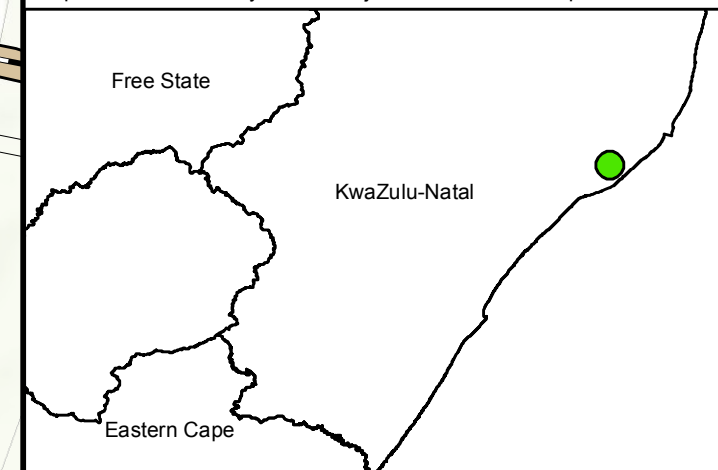
Landowners Map

Legend

-  Distribution Substation
-  Eskom Power Line
-  Regional road
-  Main road
-  Secondary Roads
-  Railway Line
-  Perennial River
-  Neighbouring Properties
-  Affected Properties
-  Farm Portions



Scale: 1:16 000
 Projection: LO31 WGS_1984
 Map Ref.: Richards Bay CCGT Project - Landowners Map - 06.04.17



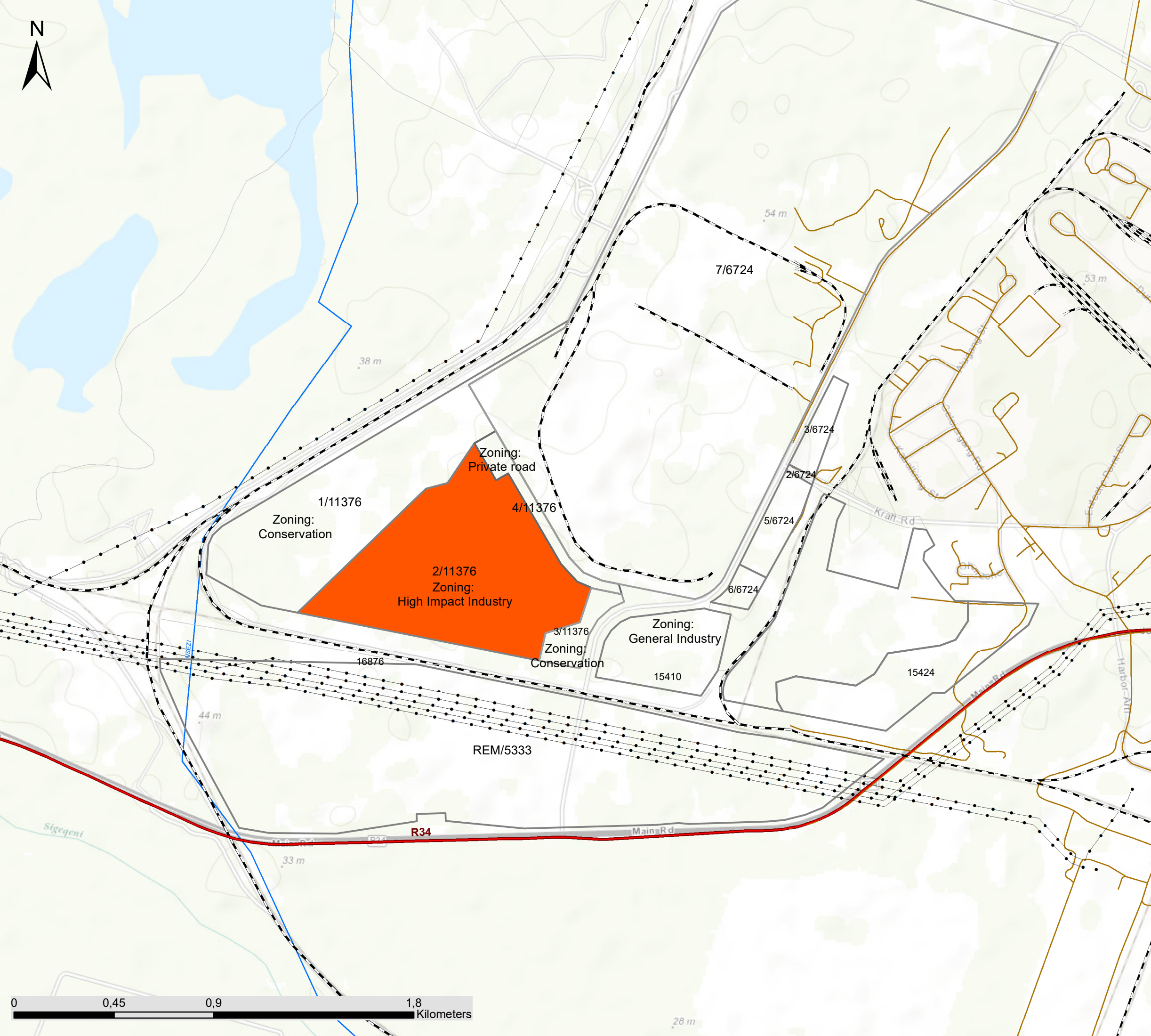
Richards Bay Combined Cycle Power Plant, KwaZulu Natal Province

Local Context Map

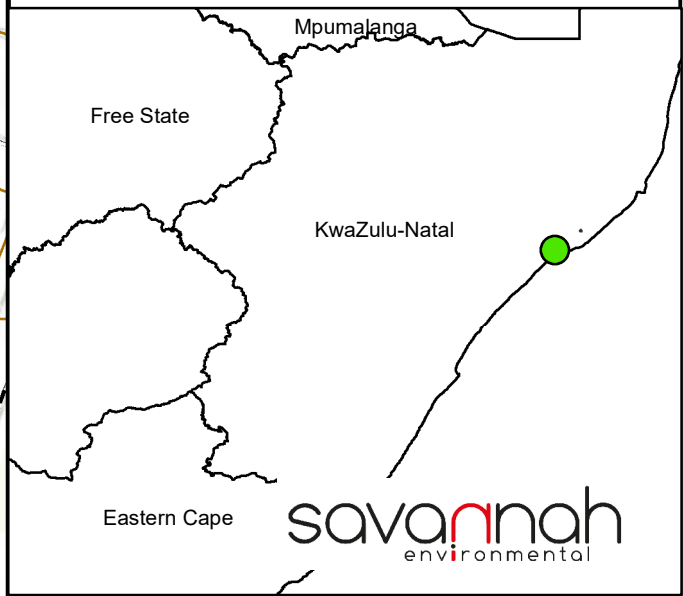


Legend

- Railway Line
- Existing Power Line
- Main road
- Secondary Roads
- Regional road
- Perennial River
- Project site
- Farm Portions



Scale: 1:16 028
Projection: LO31 WGS_1984
Map Ref.: Richards Bay CCGT Project - Environmental Sensitivity Map - 30.01.18



Richards Bay Combined Cycle Power Plant, KwaZulu Natal Province

Local Context Map

Legend

- Town
- Railway Line
- Existing Power Line
- Main road
- Secondary Roads
- Regional road
- Perennial River
- Project site
- Phase 1E
- Phase 1B
- Phase 1C
- Phase 1D
- Phase 1A
- Phase 1F
- Farm Portions

Scale: 1:30 375
 Projection: LO31 WGS_1984
 Map Ref.: Richards Bay CCGT Project - Environmental Sensitivity Map - 30.01.18

